

Reasons to Move to OneCard VIP

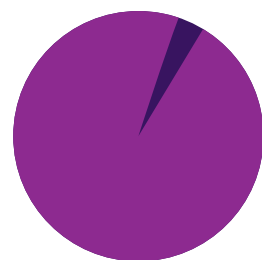
OneCard VIP hosted by TouchNet delivers a credentialing, access, and payment solution with the added benefits of greater efficiency and security requiring fewer campus resources and giving campuses the flexibility and freedom to operate from anywhere, at any time.



ONECARD VIP UPTIME EXCEEDS **99%**

excluding scheduled maintenance, ensuring accessibility and a positive student experience.

[TouchNet Stat]

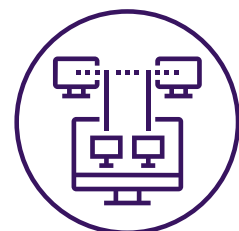


98%

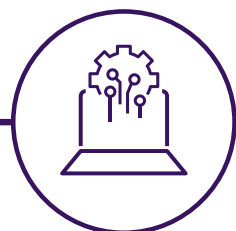
of organizations report downtime costs over **\$100,000 per hour**. There's also the cost of lost productivity and client dissatisfaction.

[source: <https://newrelic.com/resources/ebooks/uptime-is-everything>]

ONECARD VIP SOLUTION REDUCES:



Campus server space



Managed database responsibilities



Network oversight needs



Campus resource requirements



File shares for accessing OneCard resources



80% faster

Average time to perform a OneCard VIP update (new release) vs. an on-premise environment update.

[TouchNet Stat]



\$4.5k less per month

Estimated server maintenance, virus protection, remote access, etc.

[source: <https://centerbase.com/blog/cost-breakdown-of-cloud-and-on-premise-software/>]



\$15k estimated savings

No need for capital expenses such as servers, backup systems, UPSs, server licensing, etc. Instead, monthly costs are an operating expense.

[source: <https://centerbase.com/blog/cost-breakdown-of-cloud-and-on-premise-software/>]



38%

of organizations say disaster recovery is a main driver in adopting hosted service.

[source: <https://hostingtribunal.com/blog/cloud-computing-statistics/#gref>]

BENEFITS OF HOSTED

- 1 Hosted environment **frees up campus IT resources.**
- 2 Operation and administration can be **performed remotely, anywhere, at any time.**
- 3 **Data continuously syncs** across campus systems and platforms.
- 4 Seamless quarterly updates means the campus is **always running the most recent version of OneCard** with the latest and greatest features.
- 5 Access to a **dedicated, fully hosted test environment.**
- 6 Redundancy and disaster prevention measures **keep data safer and more secure.**