

touchnet

A Global Payments Company

Simplifying The Business of Higher Education



A Platform Approach

Simplify the Complex

From the day they receive their acceptance letter to the day they graduate, a student's education is all about evolution. They enter with potential and promise; they leave with proof and precision — making the leap from scholar to contributor and ready to do their part.

But it's not always easy. This transformation is made possible only by way of the work colleges and universities put in behind the scenes to ensure a student's total higher education experience is successful, both inside and outside the classroom.

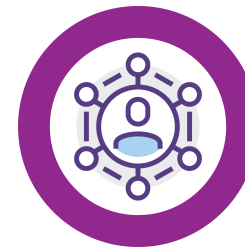
TouchNet plays its role through a laser-like focus on simplifying the necessary, complex, and time-consuming tasks that colleges and universities must perform to run a campus. By transforming tasks into seamless processes and services, TouchNet makes it easier for institutions to meet student expectations so they can concentrate on what matters most: their higher-ed experience.

As the worldwide market leader in higher education commerce technology, our platform-driven approach enables greater operational efficiencies and self-service access to real-time information for students and staff. TouchNet's cloud-based approach to payments and campus IDs is built on decades of experience with institutions all over the world. As the market leader, our U.Commerce platform unites every transaction and access point, simplifying the business of higher education.



U.Commerce Platform

Our acclaimed U.Commerce platform finds its north star in three central tenets. Whether we're offering new payment methods, payment plans, or contactless services, our technology works simply and seamlessly behind the scenes so you can provide the best campuswide experience.



Experience Streamline to exceed expectations

- U.Commerce creates a seamless and unified experience by simplifying payment and permission integrations for students and administrators alike.
- Complex or time-consuming processes are automated to help bridge the gap between business office operations, ensuring your staff can devote themselves fully to helping students and parents.
- Students can manage campus transactions online and at any time, allowing for a truly mobile, contactless experience.



Connections Integrate campuswide systems

- U.Commerce incorporates every payment and access point on campus, providing immediate visibility into student activity and ensuring transparency into processing costs.
- The 350+ Partner Network with more than 3,000+ connections invites them into an ecosystem of technology and service providers working together to provide a seamless and secure financial experience.
- We support enterprise-level integrations, allowing for real-time, automated updates to campus financial and student systems.



Trust Dedicated to Higher Ed

- We work to reduce friction and build trust in every campus interaction, from secure building access to payments made campus-wide.
- U.Commerce meets or exceeds today's regulatory standards; institutions can't trust that their data is secure. Compliance is always simplified.
- Earn students' trust by ensuring secure handling of their finances, from costs of living to tuition and book payments.
- As a longstanding leader in developing campuswide payment, student ID solutions, and services for higher education institutions, students and faculty can be assured that their business with us remains private, secure, and compliant by design.



U.Commerce Simplifies Student Finance

Challenge

As the biggest bill on campus, tuition can be challenging to accommodate with multiple terms, payment sources, financial aid, payment plans, as well as disbursements. Add to this student, parent, and sponsor expectations for different payment options, and **the need for a simplified, seamless solution is apparent.**

Solution

With U.Commerce, **student finance is simplified.** Having an integrated, self-service platform makes it easier for students to manage their accounts, and provides efficiencies for administrative management.



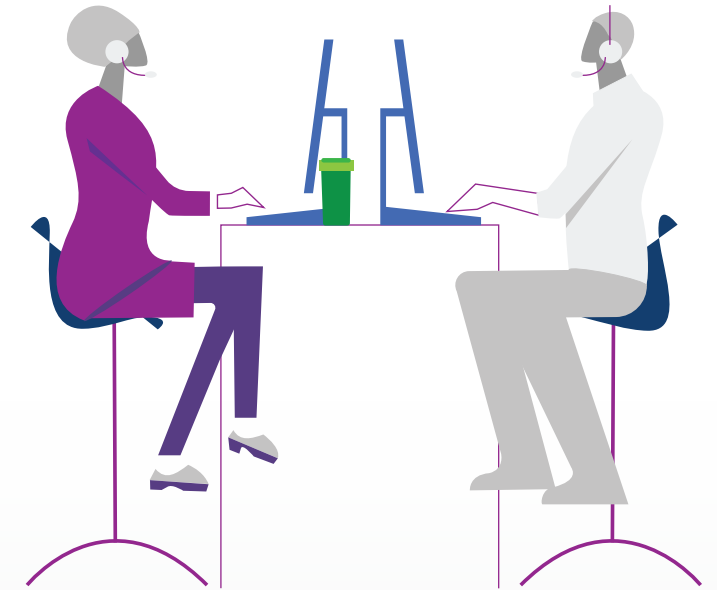
Payment Center

Secure, comprehensive student payment hub

At the center of the U.Commerce platform sits Payment Center. It serves as the hub for automating the business office and managing real-time payment transactions. A streamlined, PCI-compliant payment solution, Payment Center connects people, processes, and technologies to create an enhanced user experience, regardless of payment method or channel. Within Payment Center, you can easily set up payment and disbursement solutions that fit the needs of your campus and your students.

Refunds: Students expect to receive their refund or disbursement as quickly and easily as possible. Institutions can choose which refund and disbursement option best meets student needs while balancing cost, security, and operational requirements.

Payment Plans: Create, manage, and enroll students in tuition installment plans that you manage on campus. Our automated Payment Plans accurately reflect total balances and provide real-time updates and recalculation of payments, financial aid disbursements, and refunds.



Student Account Advisor

Our one-stop access to student account info

Student Account Advisor provides centralized oversight and enables enhanced service for students who have questions and need personal assistance immediately. Through the Student Account Advisor dashboard, your business office has access to any student's complete profile, enabling your personnel to access the data they need to deliver real-time support, respond with maximum efficiency, and provide a better student experience.

Sponsor Payments

Streamlined third-party sponsor invoicing

Sponsor Payments enables institutions to eliminate the hassle of routine billing and collections for sponsored students while automating statements, payments, and reconciliation. Universities' and sponsors' account management is streamlined and transparent—which can help provide for future program growth.

U.Commerce Simplifies Campus Services

Challenge

A campus is like a small city that accepts payments through a vast number of merchants and vendors across numerous payment channels. Students, alumni, visitors, and other campus community members **expect institutions to provide a convenient, secure, consistent transaction experience**—no matter if online, in person, over the phone, or on a mobile device.

Solution

With U.Commerce, **campus services are simplified**. Campuses can accept payments anywhere, any time, any way, while reducing their PCI compliance footprint.

Payments & Departmental Deposits

Centralized oversight of campus-based cashiering

Departmental Deposits: Streamline batch deposits from anywhere on campus, including management for non-student payments. Campus departments can record their payment transactions in a web-based application and send them to the business office with little or no help from a cashier, eliminating the need to re-enter receipts. The solution provides a detailed report and automatically updates the SIS general ledger, reducing manual processes, all while simplifying final reconciliation.

Payments: Supports multiple cashier stations, as well as in-person and over-the-phone transactions for campus merchants outside the business office. We give your cashiers flexibility when setting up their stations and simplify daily reconciliation, providing advanced reporting capabilities and updates in regard to your back-end records. Cashiers can accept in-person and over-the-phone transactions, and roles and permissions ensure only those who need access can view data and perform specific tasks



Marketplace

Easy, compliant campuswide storefronts and payment pages

Marketplace allows institutions to handle payments for all the departments, organizations, and merchants on campus. By centralizing campus payments into a unified system, Marketplace provides a seamless payment experience, streamlines back-office processing, and decreases PCI scope.

Marketplace uStores: Enables online shopping, event registration, or donations anytime, anyplace. Integration with your student information delivers advanced reporting, real-time general ledger updates, a unified product database, and shared inventory.

Marketplace uPay: Allows institutions to connect existing web and partner applications to tailored payment pages in a secure, PCI-compliant environment. uPay collects all the payment information, updates the general ledger, and returns the payer to the original web application.

Marketplace Point of Sale (POS): Point of Sale is an easily configurable and highly flexible solution with a wide array of connected devices that enables streamlined campus transactions with receipts—from dining, concessions, athletic events, concerts, theater productions, and more. Institutions can accept credit, cash, or stored value for attended payments.



U.Commerce Simplifies Campus ID Management

! Challenge

A campus ID is used for more than simply identification. Campus IDs unlock services, including everything from **secure building access and class check-in to stored value and event registration**. Whether physical or mobile, the campus ID needs to integrate with campus systems, be easy to use, and provide contactless methods for payments and access. As a result, ID systems on campus are complex.

@ Solution

With U.Commerce, campus ID management is easier to manage than ever. Users get the secure access and the robust campus experience they want, while institutions gain centralized management, security, and campus engagement data.

Campus ID

Integrated, secure identity management

Campus ID is a cloud-based payments and permissions solution that is your key to campus life. Both physical and digital ID users have the convenience of door access, event check-ins, payments, and more. At the same time, the related data syncs with your student information system for complete lifecycle management. The solution is easy to implement and use, and provides secure management of permissions, privileges, and financial authorizations.

Declining Balance: The declining balance functionality allows the campus community to load funds and make payments using their campus ID, providing a cashless experience. The closed-loop, PCI-compliant card functions like a debit card without merchant card processing fees.

Mobile ID: Using our mobile app or your own, Mobile ID provides user-friendly, secure options to get into dorms and campus buildings, make purchases, and more—all through a mobile device with digital wallet integration available. Using our mobile app allows students and faculty to check in to class, register for campus activities, and navigate to locations on campus with a single sign-on.



Dining and Meal Plans

Flexible meal plan and queue management

Dining and Meal Plans offers tailored dining experiences by allowing students to purchase meals, order meals in advance, and use meal plans. Permissions can be adjusted in real-time, helping control traffic and resources. Reporting data also provides staff with valuable insights to guide decisions.

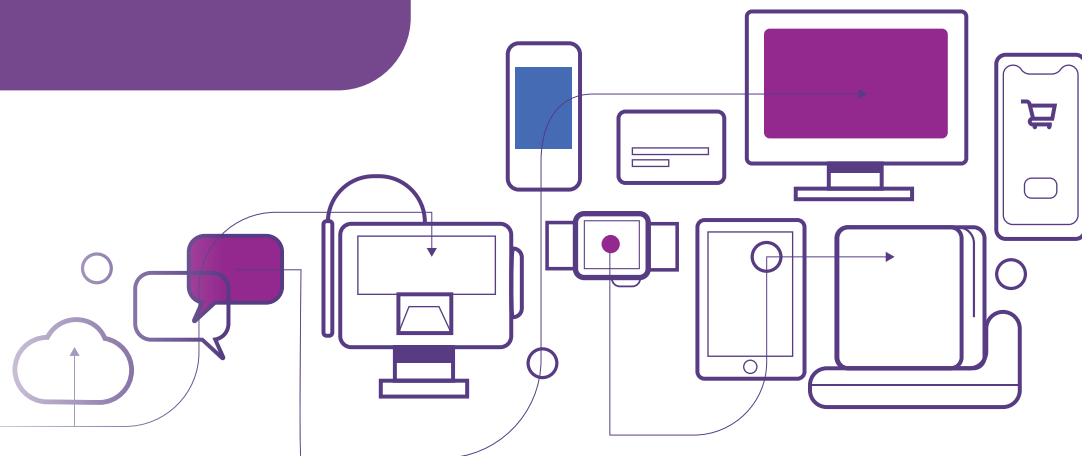
OrderAhead: This app is a queuing system that allows students to place orders with dining halls and other campus services. It gives institutions the ability to control capacity, manage orders and supplies, and increase engagement with loyalty programs.

Meal Plans: Provide cashless access to on-campus dining with a pre-paid meal plan account. Institutions can offer a variety of meal plan options and time ranges with the ability to restrict to certain dining halls for flexible control.

Access

Campus IDs integrated with industry-standard lock technology

Access connects the Campus ID with industry-standard, integrated lock technology to keep your campus safe for students, faculty, staff, and visitors. Several door hardware options are available, including wired, wireless, electronic strike, magnetic locks, biometric readers, and mobile applications. Administrators can control building permissions on-site or remotely, based on a variety of criteria, regardless if hardware is online or offline.



U.Commerce Simplifies Merchant Services



Challenge

From departments and clubs to third-party vendors, there are a large number of campus entities that must **securely take a variety of payment methods**. And the complexities increase when you consider each must also set up payment gateways, integrate with point-of-sale systems, meet compliance requirements, report on transaction activity, reconcile to multiple systems, and more.



Solution

With U.Commerce, **merchant services are simplified**. Centralized management enables streamlined reconciliation and ensures compliance across all payment channels to keep your payment processing running smoothly.

Payment Processing

Payments are processed in real-time and updates to the student account are automated, which gives staff more time to support student needs. U.Commerce accepts a range of payments, from traditional payment cards and bank transfers to international payments and alternative payment methods.

MID Management

Structure merchant IDs and payment acceptance processes to achieve the lowest interchange costs while simplifying reconciliation and PCI reporting. By consolidating MIDs, institutions can easily match deposits to the correct department or revenue channel for easy tracking and faster reconciliation.

Reconciliation Services

Reconciliation Services allows you to analyze, reconcile, and evaluate campus payments by unifying data from your student information system, our payment processing service, and other U.Commerce solutions. The dashboard provides access to in-depth transaction details and allows you to sort by date, time range, transaction number, and Merchant ID to drill down into data for additional insights.

Compliance

Compliance is built into U.Commerce solutions, meeting or exceeding card brand and association rules. From PCI compliance and Nacha rules to Department of Education and privacy regulations, we proactively update our payment environment to meet evolving requirements. Our holistic view includes encryption, tokenization, and end-to-end transaction processing so payment security is maintained, payment data is protected, and compliance is simplified.

PayPath

PayPath offers students, parents, and sponsors the ability to pay for tuition and other qualified services by credit card at no cost to the institution. By replacing credit card merchant fees with a supplemental student service or convenience fee, PayPath enables universities and colleges to offer the convenience of credit cards and still receive 100 percent of each payment. It complies with card brand and association rules, reducing the scope of campus compliance. PayPath integrates with campus student information systems and eliminates manual work by automating transaction posting.

Advancing the Mission of Higher Education

Those who choose to work in higher education are called to create a better world by educating and improving the lives of the students who pass through their halls. At TouchNet, we share this mission. We understand the evolving needs of students and the complexity of running an institution of higher education.

We understand that it takes a village to make progress towards this mission and that higher ed is a community that supports each other rather than competes. That's why we're with you. From discovery and innovation of new solutions through implementation and ongoing improvement, our team is with you every step of the way to advance the mission of higher education.

Our U.Commerce platform works simply and seamlessly behind the scenes, so you can provide the best campuswide experience. TouchNet offers best-in-class solutions and services to simplify the business of higher education.

To learn how your peers worldwide have found success with the U.Commerce platform, visit www.touchnet.com.



Scan for more information including
access to videos, case studies and more.
Or visit touchnet.com.



TouchNet, a Global Payments Company, unifies campuswide payments and ID management software solutions for institutions of higher education around the world. Colleges and universities rely on TouchNet to integrate and secure payments, permissions, and other related business transactions for a comprehensive, actionable view campuswide. TouchNet's unmatched integration, transparency, and security give institutions greater control over transactions, costs, and compliance.

touchnet

A Global Payments Company